

harmony[®]

Litewave[™]

UMBRELLA PUSHCHAIR
WITH CANOPY

INSTRUCTION MANUAL



max 15 kg

This pushchair is intended for children
from 6 months up to a maximum weight of 15 kg.

Complies with BS EN 1888-1:2018

IMPORTANT – Keep these instructions for future reference.

Your child's safety may be affected if you do not follow these instructions.



! NOT SUITABLE FOR CHILDREN UNDER 6 MONTHS.

**IF YOU HAVE ANY PROBLEMS, PLEASE DO NOT
RETURN THIS PRODUCT TO THE PLACE OF PURCHASE.
PLEASE CONTACT HARMONY CUSTOMER SERVICE AT
+44 (0) 1704 549881 OR AT WWW.HARMONYJUVENILE.COM**

WARNINGS



IMPORTANT – KEEP THESE INSTRUCTIONS FOR FUTURE REFERENCE. Read all instructions BEFORE use of product. Your child's safety may be affected if you do not follow these instructions.

THIS PRODUCT IS DESIGNED FOR CHILDREN FROM 6 MONTHS TO A MAXIMUM OF 15 KG.

Complies with BS EN 1888-1:2018.

Only replacement parts supplied or recommended by Harmony Juvenile Products shall be used.

GENERAL WARNINGS

⚠ WARNING!

FAILURE TO PROPERLY READ, FOLLOW AND USE THESE INSTRUCTIONS AND THE PUSHCHAIR LABELS INCREASES THE RISK OF SERIOUS INJURY OR DEATH. FOR YOUR CHILD'S SAFETY, FOLLOW ALL LABELS ON THIS PUSHCHAIR AND IN THESE WRITTEN INSTRUCTIONS. DO NOT INSTALL OR USE THIS PUSHCHAIR UNTIL YOU READ AND UNDERSTAND THE WARNINGS AND ASSEMBLY INSTRUCTIONS.

⚠ WARNING!

NEVER LEAVE A CHILD UNATTENDED. NEVER leave children alone in this pushchair under any circumstance. **ALWAYS** keep child in view while in pushchair.

⚠ WARNING!

PLACING PARCELS, ACCESSORIES OR OTHER ITEMS ON THE PUSHCHAIR OR ANY OF ITS PARTS (INCLUDING HANGING ON THE HANDLEBAR), MAY CAUSE THE UNIT TO BECOME UNSTABLE AND MAY LEAD TO SERIOUS INJURY OR DEATH.

! KEEP INSTRUCTIONS FOR FUTURE USE.

! WARNING Never leave the child unattended.

! WARNING Ensure that all the locking devices are engaged before use.

! WARNING To avoid injury ensure that the child is kept away when unfolding and folding this product.

! WARNING Do not let the child play with this product.

! WARNING This seat unit is not suitable for children under 6 months.

! WARNING Always use the restraint system.

! WARNING Check that the pushchair is correctly engaged before use.

! WARNING This product is not suitable for running or skating.

! WARNING Any load attached to the handle and/or on the back of the backrest and/or on the sides of the vehicle will affect the stability of the vehicle.

! WARNING Parking device shall be engaged when placing and removing the children.

! REMOVE packing materials and polybags, and dispose of them before assembly. Plastic bags can cause suffocation. Keep plastic bags away from children.

! Adult assembly required. DO NOT use this pushchair without properly assembling it.

! DO NOT EXCEED THE MANUFACTURER'S RECOMMENDED LOAD as this pushchair can become unstable and cause serious injuries.

! DO NOT allow children to play with this pushchair.

! PARTS OF THIS PUSHCHAIR COULD BECOME HOT ENOUGH TO BURN THE CHILD IF LEFT IN THE SUN. Contact with these parts can injure your child. **ALWAYS** touch the surface of any metal or plastic part before putting your child in the pushchair.

! DO NOT use this pushchair if it is damaged in any way or has missing parts.

! DO NOT tamper with or modify the pushchair for any reason.

! DO NOT, EXCEPT AS DESCRIBED IN THESE INSTRUCTIONS, MODIFY YOUR PUSHCHAIR, DISASSEMBLE ANY PART OR CHANGE THE WAY THE HARNESS BELTS ARE USED. This includes adding any parts or accessories by other manufacturers as non-tested accessories can affect the safety of the pushchair.

! Only replacement parts supplied or recommended by Harmony Juvenile Products shall be used.

! It is recommended to routinely inspect, maintain, clean and/or wash your pushchair.

! In some climates mould and mildew can affect the fabric. To avoid this, DO NOT fold the pushchair when it is wet. Leave it open in a ventilated area until completely dry.

! ALWAYS store the pushchair in a dry place.

! When storing the pushchair in the car, NEVER place other items on top of it.

HARNESS SYSTEM WARNINGS

⚠ WARNING!

AVOID SERIOUS INJURY FROM FALLING OR SLIDING OUT. ALWAYS USE THE HARNESS PROVIDED.

! Children should be HARNESSSED every time you use this pushchair.

! Snugly adjust harness around child.

FINGER ENTRAPMENT WARNINGS

! AVOID SERIOUS INJURY by keeping fingers away from the pushchair when folding, unfolding or adjusting the pushchair and canopy.

! ALWAYS keep hands and fingers away from moving parts to prevent finger entrapment and pinching injuries.

USAGE WARNINGS

- ! **ENSURE** that pushchair is completely **LOCKED IN THE OPEN POSITION** prior to use.
- ! **ALWAYS** use the brakes when pushchair is stopped. **ENSURE** the brakes are fully engaged before releasing the pushchair.
- ! **NEVER** use the pushchair on stairs or escalators. Incorrect use of a pushchair is the most common mistake people make which can lead to serious injuries. Use your pushchair in the way it was intended for use, and be extra careful when going up or down (e.g. a curve), or on other uneven places or in unstable conditions.
- ! **NEVER** run or rollerblade with your pushchair. The pushchair should be used at **WALKING SPEED**. The pushchair **CANNOT** be used at higher speeds while jogging, skating, etc.
- ! **NEVER** allow a child to fold, unfold or adjust the pushchair to prevent injuries.
- ! This pushchair is for use with **ONE CHILD AT A TIME**.
- ! The tyres may leave black marks on some floors (particularly on smooth floors such as parquet, synthetic laminates, linoleum, etc.).
- ! **DO NOT** use excessive force when folding the pushchair. If you are having problems, fully open the pushchair and repeat the folding procedure.
- ! **ALWAYS** let wheels down as gently as possible when mounting and dismounting kerbs.
- ! **ALWAYS** fold the pushchair when going up or down stairs. Never bump the pushchair over these or similar obstacles.
- ! **ENSURE** brakes are engaged when placing and removing children from the pushchair.

TIPPING WARNINGS

- ! **NEVER** allow children to climb into the pushchair unassisted. Pushchair may tip over and injure child. Lift a child in and out of the pushchair.
- ! **DO NOT** allow a child to stand on the footrest or feet.
- ! **NEVER** allow children to hang onto the pushchair.
- ! **NEVER** place / hang bags, purses, parcels, etc. or any accessory on the handlebar or any other pushchair parts as it could cause the pushchair to become unstable.
- ! **NEVER** place anything on the canopy as this can cause the canopy to collapse and seriously injure your child.

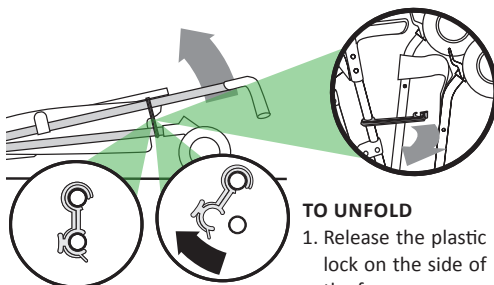
CERTIFICATIONS

Harmony Juvenile Products certifies the compliance of this pushchair to *BS EN 1888-1:2018*.

Harmony Juvenile Products has also validated compliance through independent laboratory testing.

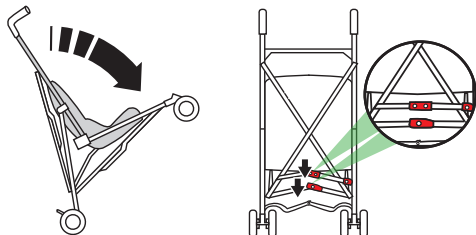
Imported by Harmony Juvenile Products, 10 Beach Priory Gdns., Southport, UK, PR8 1RT, +44 (0) 1704 549881.

UNFOLDING/FOLDING PUSHCHAIR



TO UNFOLD

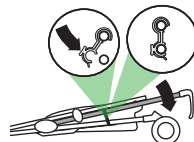
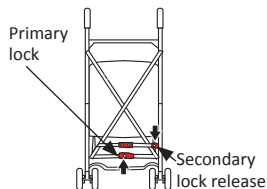
1. Release the plastic lock on the side of the frame.



2. Stand pushchair upright and push the front wheels down.
 3. Push down the locking bars (x2) until straight and engaged.
- ! **WARNING:** Check that both locks are in a flat-horizontal position.

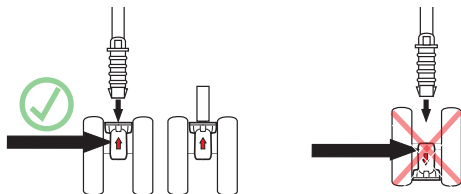
TO FOLD

1. Engage both brakes.
2. Release lower primary lock by pushing "in" then "upwards".
3. Press the secondary lock release downwards.



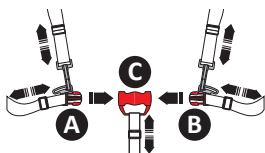
4. Push the handles forward.
5. Secure the plastic safety lock.

FITTING FRONT WHEELS



Install front wheels, with arrow indicator pointing up, on front bars as shown (x2).

ADJUSTING HARNESS



TO FASTEN
Insert both fasteners (A & B) securely into the clasp (C). Adjust each strap length with sliders.

TO RELEASE
Press the fastener prongs and pull apart.

Your child should be securely harnessed **AT ALL TIMES** and should **NEVER** be left unattended, even for short periods.

ENSURE that the harness is snugly adjusted at all times.

APPLYING/RELEASING BRAKES



Push down firmly on both brake pedals to engage the brakes.

Pull up to release the brakes.



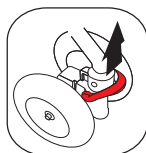
! WARNING: ENSURE that the brake is fully engaged on **EACH WHEEL**.

Check that the brakes have engaged correctly

by gently pushing the pushchair.

! WARNING: Apply the brakes each time you park the pushchair.

MANOEUVRABILITY



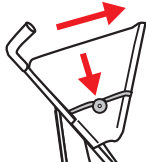
To lock the swivels: align the front wheels and raise each lock.



To unlock the swivels: push down on each lock.

TIP: The locked position is ideal when using pushchair on rocky or uneven terrain which can cause the wheels to jump/turn unnecessarily.

CANOPY



The canopy can be opened by pulling the canopy out and pushing down on both canopy locks.

To close canopy, push up both canopy locks and pull back canopy.

CARE AND MAINTENANCE

CLEANING THE CHASSIS:

- The pushchair must be maintained regularly to provide full satisfaction. We advise you to regularly check mechanical parts for cleaning, if necessary.
- Wipe the frame with a clean cloth. Clean and dry the chassis thoroughly every time the pushchair has been in muddy and sandy areas.
- Do not grease or oil.
- The pushchair may not work properly if not regularly maintained.
- Do not force it if the pushchair is difficult to fold or unfold. If difficulties persist, contact Harmony Customer Service at +44 (0) 1704 549881 or at www.harmonyjuvenile.com.

CLEANING THE FABRIC:

- Use a sponge and mild soap. Do not use detergent.

WARRANTY

This product was manufactured by Harmony Juvenile Products® (HJP). HJP warrants this product to the original retail purchaser as follows:

LIMITED 1-YEAR WARRANTY

This product is warranted against defective materials and workmanship for one year from the date of original purchase. An original receipt is required to validate your warranty. HJP will, at its option, provide replacement parts for this product or replace this product. HJP reserves the right to discontinue or change fabrics, parts, models or products, or to make substitutions.

To make a claim under this warranty, you must contact HJP Customer Service at www.harmonyjuvenile.com, or call +44 (0) 1704 549881, or write to 10 Beach Priory Gdns., Southport, UK, PR8 1RT.

Proof of purchase is required and shipping charges are the responsibility of the consumer.

WARRANTY LIMITATIONS

This warranty does not include damages which arise from negligence, misuse, or use not in accordance with this instruction manual.

LIMITATIONS OF DAMAGES

The warranty and remedies as set forth above are exclusive and in lieu of all others, oral or written, expressed or implied. In no event will HJP or the retailer selling this product be liable to you for any damages, including incidental or consequential damages, or loss of use arising out of the use or inability to use this product.

PLEASE REGISTER THIS PRODUCT WITHIN 30 DAYS OF PURCHASE TO EXPEDITE WARRANTY CLAIMS AND TO VERIFY ORIGINAL DATE OF PURCHASE.

harmony®

To order other products, please visit our website www.harmonyjuvenile.com. Stay informed, ask questions, connect, follow, have a conversation and post photos and videos with us through the Social media channel you use:

Twitter @harmonyjuvenile

Facebook www.facebook.com/HarmonyJuvenileProducts

LinkedIn www.linkedin.com/company/harmony-juvenile-products

If you have an issue that requires action, please call Customer Service at +44 (0) 1704 549881, or email customerservice@harmonyjuvenile.com.