

# harmony<sup>®</sup>

## INSIGHT DELUXE i-SIZE CAR SEAT INSTRUCTION MANUAL



This child restraint complies with ECE regulations for use by children:

- Height: 100 to 150 cm (i-Size booster seat)

For children 4 years to approx. 12 years

### READ THIS MANUAL

Do not install or use this child restraint until you read and understand the instructions in this manual and in your vehicle owner's manual.

**FAILURE TO PROPERLY USE THIS CHILD RESTRAINT INCREASES THE RISK OF SERIOUS INJURY OR DEATH IN A SHARP TURN, SUDDEN STOP OR CRASH.**



**IF YOU HAVE ANY PROBLEMS, PLEASE DO NOT RETURN THIS PRODUCT TO THE PLACE OF PURCHASE. PLEASE CONTACT CUSTOMER SERVICE AT [WWW.HARMONYJUVENILE.COM](http://WWW.HARMONYJUVENILE.COM)**

## REGISTRATION INFORMATION

---

**REGISTER YOUR CHILD RESTRAINT TODAY!** Child restraints could be recalled for safety reasons. You must register this restraint to be reached in a recall, and to be eligible to receive replacement parts while under warranty.

The model number, serial number and manufacturing date can be found on a label on the underside of the child restraint.

**Visit [www.harmonyjuvenile.com/uk/register](http://www.harmonyjuvenile.com/uk/register) to register your child restraint online, mail-in the registration card or send your name, address, the restraint's model number, manufacturing date and date of purchase to:**

**Harmony Juvenile Products UK  
10 Beach Priory Gdns.  
Southport, UK  
PR8 1RT**

For recall information, any questions you may have, or to make a change of address or contact information, please visit us online at **[www.harmonyjuvenile.com](http://www.harmonyjuvenile.com)**.

**PLEASE DO NOT SEND IN YOUR REGISTRATION CARD IF  
YOU HAVE REGISTERED YOUR RESTRAINT ONLINE.**

## IF YOU NEED HELP

---

Please fill in the information below for future reference. The model number and manufacturing date can be found on a label on the underside of the child restraint.

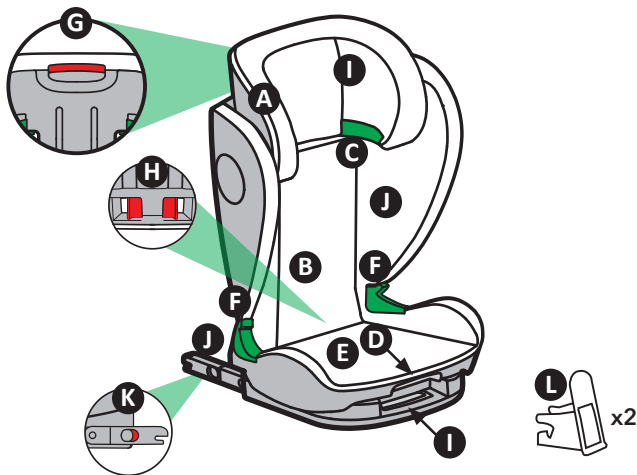
**Model Number:** \_\_\_\_\_

**Manufacture Date:** \_\_\_\_\_

**Date of Purchase:** \_\_\_\_\_

Our Customer Service Department is standing by to help you with any questions or concerns you may have regarding installation, use, care and/or parts. Please have your product's model number and manufacturing date available when contacting us.

## PARTS LIST

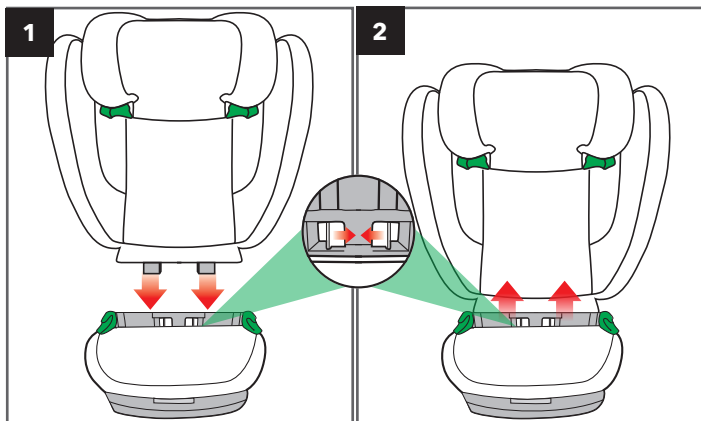


- A** Headrest fabric cover (pre-installed)
- B** Backrest fabric cover (pre-installed)
- C** Shoulder belt guides
- D** Recline adjustment handle
- E** Base fabric cover (pre-installed)
- F** Lap belt guides
- G** Headrest height adjustment handle
- H** Backrest lock button
- I** Isofix release handle
- J** Isofix connectors
- K** Isofix indicator
- L** Isofix insert guides (x2)

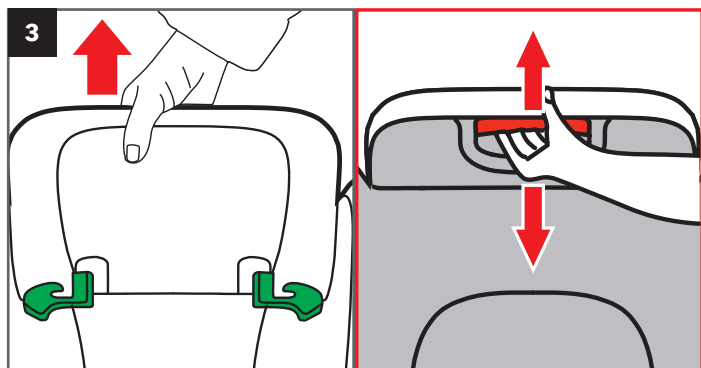
### TO PURCHASE REPLACEMENT PARTS:

In the United Kingdom, please contact us at  
[www.harmonyjuvenile.com](http://www.harmonyjuvenile.com).

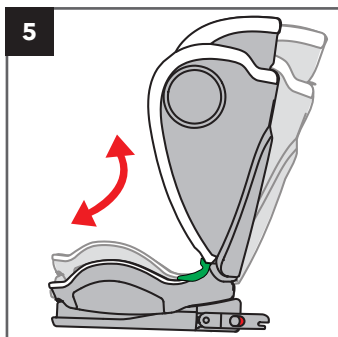
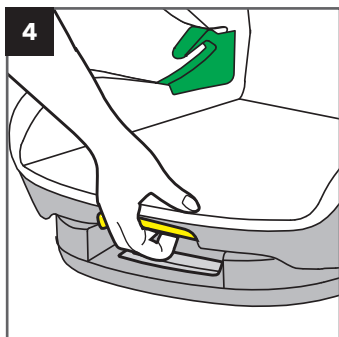
## ASSEMBLING/DISASSEMBLING BOOSTER SEAT



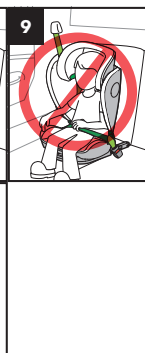
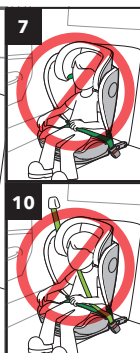
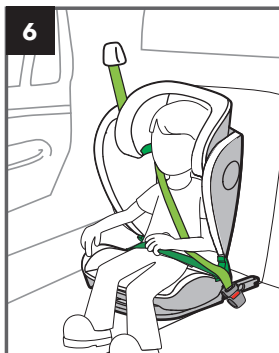
## HEADREST HEIGHT ADJUSTMENT



## RECLINE

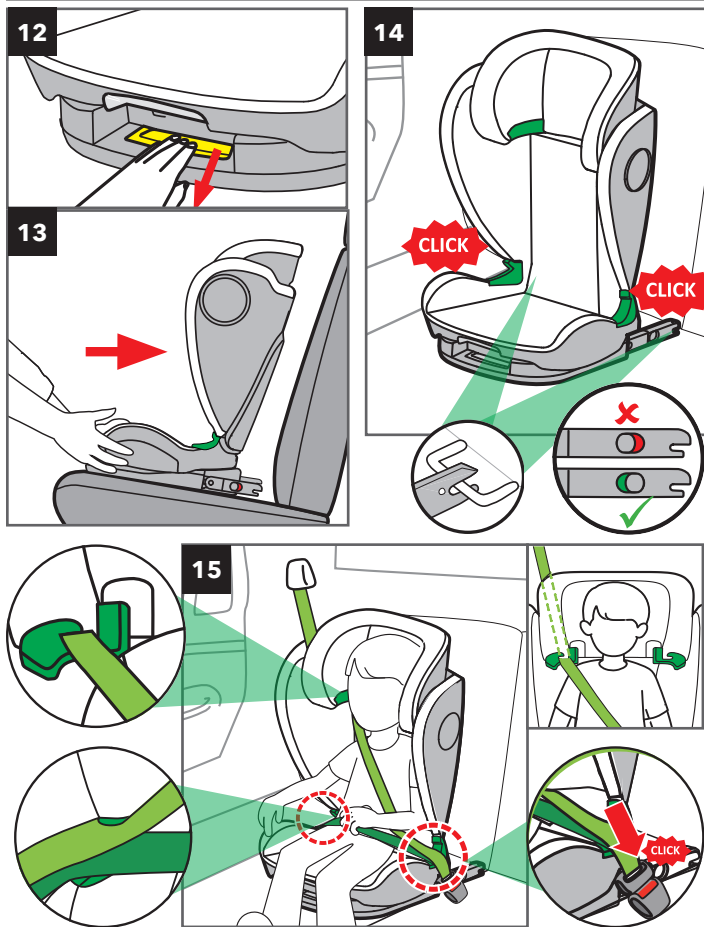


## SECURING CHILD AND BOOSTER SEAT IN VEHICLE

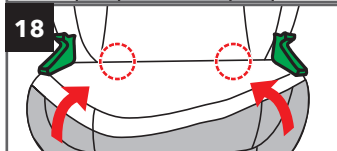
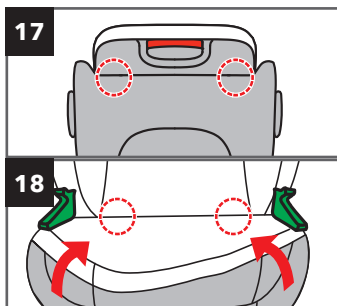
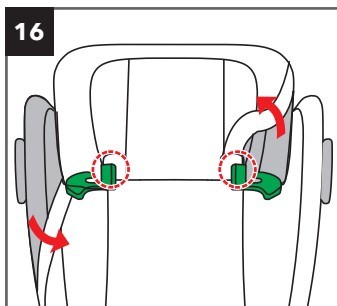


# INSTALLING WITH (OR WITHOUT) ISOFIX SYSTEM & VEHICLE SEAT BELT

i-SIZE BOOSTER SEAT (100 TO 150 CM)



## REMOVING/INSTALLING FABRIC SEAT COVER



## CERTIFICATIONS

This is a i-Size booster seat Enhanced Child Restraint System. It is approved according to UN Regulation No 129, for use primarily in “i-Size seating positions” as indicated by vehicle manufacturers in the vehicle user’s manual.

If in doubt, consult either the Enhanced Child Restraint System manufacturer or the retailer.

The Enhanced Child Restraint **IS CERTIFIED** for use in the following classes of vehicles **ONLY**: multi-purpose passenger vehicles, passenger cars, and trucks. Harmony Juvenile Products has also validated compliance through independent laboratory testing.

This restraint is **NOT CERTIFIED** for aircraft use.

This child restraint must **NOT** be used in homes, boats, buses, motorcycles, motor homes, or any other vehicles that have non-forward-facing seats, missing seat belts, or whose seat belts do not meet the requirements of this child restraint.

## ASSEMBLING/DISASSEMBLING BOOSTER SEAT

1. Squeeze backrest lock button (**UNDER THE FABRIC**) while inserting extensions on bottom of backrest into the corresponding slots on seat base **(1)**. Listen for a 'click' to ensure backrest is locked into place. **ENSURE THAT BACKREST IS COMPLETELY LOCKED INTO THE UPRIGHT POSITION BY GENTLY PULLING/PUSHING IT UPWARDS/DOWNWARDS.**

To remove backrest, squeeze backrest lock button and lift up backrest from seat base **(2)**.

## PREPARING BOOSTER SEAT FOR USE

### **WARNING!**

**INCORRECT USE OF THE VEHICLE'S 3-POINT LAP-AND-SHOULDER SEAT BELT SYSTEM IS THE MOST COMMON MISTAKE PEOPLE MAKE. IT IS VERY IMPORTANT TO READ, UNDERSTAND AND FOLLOW ALL INSTRUCTIONS AND WARNINGS. DO NOT MISTAKE COMFORT FOR SAFETY. THE VEHICLE'S 3-POINT LAP-AND-SHOULDER SEAT BELT MUST BE SNUGLY ADJUSTED AT ALL TIMES.**

**! ENSURE** the vehicle shoulder belt's position is correct for your child's size. **VERIFY OFTEN.**

**! WARNING: DO NOT** use this booster seat if the midpoint of your child's head is above the top of the booster seat headrest at its maximum height.



## HEADREST HEIGHT ADJUSTMENT

Your booster seat has **ELEVEN** height adjustments. Adjust the headrest to properly position the vehicle seat belt as the child grows.

Adjust headrest height so that the shoulder belt is **EVEN** with or **JUST ABOVE** the top of the child's shoulders.

- Use one hand to squeeze the headrest height adjustment handle found on the rear of the headrest while simultaneously pulling the headrest up or down to the desired height with the other hand **(3)**.

## RECLINE

### **WARNING!**

**YOUR CHILD RESTRAINT RECLINES TO ENSURE PROPER INSTALLATION INTO YOUR VEHICLE. THE CHILD RESTRAINT MUST BE INSTALLED SO THAT ALL OF ITS SURFACE AREA IS IN CONTACT WITH YOUR VEHICLE SEAT.**



Place the child restraint in the desired seating position. Lift the recline handle found underneath the front of the seat **(4)** and adjust the base to the desired angle **(5)**. Release the handle when done and gently push on the seat to ensure it is firmly locked in place. An audible 'click' will ensure it is locked in place.

**! WARNING:** Remove the vehicle headrest if it inhibits the child restraint from lying flush against the vehicle seat back.

**PLEASE USE THE RECLINE ANGLE THAT MATCHES THE ANGLE OF THE VEHICLE SEAT.**

## INSTALLING WITH (OR WITHOUT) ISOFIX SYSTEM & VEHICLE SEAT BELT

### i-SIZE BOOSTER SEAT (100 TO 150 CM)

**Isofix** is used for installing the booster seat **IN CONJUNCTION WITH** the use of the vehicle 3-point seat belt to secure the child.

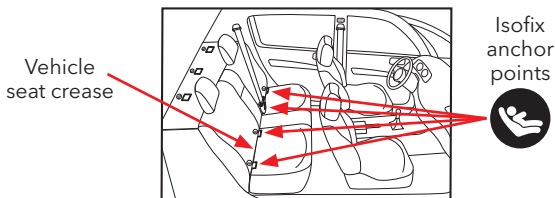
**! Isofix connectors can ONLY be used if your vehicle has the Isofix anchors installed and designated Isofix seating positions. Check your vehicle owner's manual to see which seating positions may be suitable with Isofix.**

## ISOFIX

If your vehicle is equipped with Isofix anchors, the vehicle Isofix anchorage points may be visible at the seat crease. If not visible, they may be marked with this symbol.



**Check your vehicle owner's manual for your vehicle's exact Isofix locations, anchor identifications and usage requirements for use with a child restraint.**



**! WARNING:** CONSULT YOUR VEHICLE OWNER'S MANUAL FOR THE EXACT PLACEMENT OF THESE ELEMENTS IN YOUR VEHICLE, AND FOR MAXIMUM ISOFIX WEIGHT ALLOWANCES PRIOR TO INSTALLATION AS SOME MANUFACTURERS HAVE LOWER MAXIMUM WEIGHT ALLOWANCES FOR ISOFIX USAGE.

## SECURING CHILD AND BOOSTER SEAT IN VEHICLE



# WARNING!

**FAILURE TO PROPERLY SECURE YOUR CHILD IN THE BOOSTER SEAT INCREASES THE RISK OF SERIOUS INJURY OR DEATH IN THE EVENT OF A SHARP TURN, SUDDEN STOP OR CRASH.** In a crash, the booster seat provides **NO** protection for your child unless the vehicle 3-point lap-and-shoulder belt is properly secured. Follow these instructions carefully to properly secure your child.

**! WARNING:** You **MUST** use the vehicle 3-point lap-and-shoulder belt system when restraining the child in the booster seat **(6)**.

**! WARNING:** Vehicle belts **MUST** be tight, adjusted to the child's body, and should not be twisted **(6)**.

**! NEVER** use a vehicle lap-only belt to secure child in booster seat **(7)**.

**! NEVER USE A LOOSE SHOULDER BELT.**

**! NEVER** position the shoulder belt under the child's arm **(8)** or place the shoulder belt behind the child's back **(9)**.

**! DO NOT** allow the child to slouch, slide down in the seat, or create slack in the belt system **(10)**. If child will not keep vehicle belt properly positioned, **DO NOT** use this booster seat.

**! The vehicle seat headrest should not create a gap between vehicle seat and booster seat (11).** If so, remove the vehicle headrest.

**IF IN DOUBT ABOUT THESE POINTS OR ANY QUESTIONS RELATED TO INSTALLATION, PLEASE CONTACT HARMONY JUVENILE PRODUCTS.**

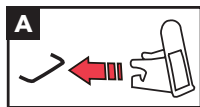
## INSTALLATION

# **WARNING!**

**DUE TO VARYING ANGLES OF VEHICLE SEAT BELT RETRACTORS, EXCESS SLACK IN THE VEHICLE BELT SYSTEM MIGHT NOT BE REMOVED AUTOMATICALLY.** Once the lap and shoulder portions of the seat belt are properly positioned and the buckle is attached, **FEED ANY REMAINING SLACK OF THE SEAT BELT MANUALLY BACK INTO THE RETRACTOR TO TIGHTEN THE WHOLE SYSTEM.**

1. Install Isofix insert guides **(A)** (x2):

With the guides facing upwards, push plastic casing into the Isofix anchors.



2. Identify the Isofix connectors located at the rear of the seat base.
3. Locate the Isofix release handle under the front of the seat base. Grasp handle to release the Isofix connectors underneath the rear of the seat backrest **(12)**.
4. Place the child restraint flush against a forward-facing vehicle seat, centered between the Isofix anchors **(13)**.
5. Push the Isofix connectors into the Isofix anchorage points until these lock into place with an audible "click". The two Isofix indicators will switch from red to **GREEN (14)**.
6. Push the booster seat towards the backrest of the vehicle seat until it is fully aligned with the vehicle backrest.
7. Place child in the booster seat with child's back flat against the back of the booster seat.
8. Adjust headrest height so that the shoulder belt is **EVEN WITH OR JUST ABOVE** the top of the child's shoulders (see "Headrest height adjustment").
9. Thread shoulder belt portion of the 3-point lap-and-shoulder belt system through the shoulder belt guide **(15)** and ensure that shoulder belt lies across child's shoulder and chest, and **NOT** across child's face or neck.
10. **Thread both sides of the lap belt over lower guides on both sides as indicated (15). ENSURE that the belt is snug across the child's hips. It is important to ensure that the lap strap is worn low down, so that the pelvis is firmly engaged, just touching their thighs and is NOT across their stomach.**



**Lap portion of lap-and-shoulder belt MUST be low and snug across the hips, with the pelvis firmly engaged, just touching the child's thighs.** The lap portion **MUST NOT** be lying across the child's stomach as this can cause major injuries to the child in case of a sharp turn, sudden stop or crash.

11. Buckle the vehicle seat belt into place and ensure it is secure by gently pulling on it.

! Any straps holding the restraint to the vehicle should be tight, any straps restraining the child should be adjusted to the child's body, and all straps should not be twisted.

! Teach your child that seat belts are not toys and should **NEVER** be played with, regardless of whether the car is in motion or not.

! **ALWAYS** be aware of what your children are doing in the back seat.

## DISENGAGING ISOFIX CONNECTORS

---

To disengage the Isofix connectors:

Press the Isofix Release Buttons on each side of the Isofix connectors. To fully retract the Isofix, push Isofix connectors back inside seat base.

## REMOVING/INSTALLING FABRIC SEAT COVER

---

### Headrest:

Adjust headrest to its maximum height (see "Headrest height adjustment"). Unhook the elastic loops from each headrest shoulder belt guide opening on the bottom of the headrest. Gently pull the elastic sides up and over the headrest. **(16)**.

### Backrest:

- Unhook the elastic loops from the top of the backrest (behind headrest) Grasp fabric cover from the top of the backrest and gently slide the cover off to remove.

### Base:

- Unhook the elastic loops from the top of the base (below bottom of the backrest) and gently slide the fabric cover off the base.

! **ENSURE** that the gaps of the covers do not get caught on the plastic parts of the seat.

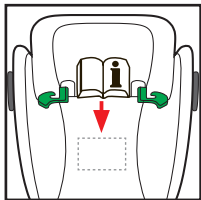
### TO INSTALL:

To reinstall fabric covers, repeat previous steps in reverse order. Tuck elastic edges of fabric into the plastic grooves on the booster seat.

## INSTRUCTION MANUAL STORAGE

---

We recommend that you store your instruction manual in the pocket on the backside of the backrest fabric on the booster seat.



## WARNINGS

### GENERAL WARNINGS



# WARNING!

The safety of your child and the effectiveness of this child restraint depend on:

1. **Selecting a suitable location** for the child restraint in your vehicle.
2. **Properly routing the vehicle seat belt.**
3. **Properly securing both your child and the child restraint in the vehicle.** Many seat belts are **NOT** safe to use with this child restraint. If in doubt about installing this child restraint, consult the vehicle owner's manual or contact the Harmony Customer Service Department.



# WARNING!

**FAILURE TO PROPERLY READ, FOLLOW AND USE THESE INSTRUCTIONS AND THE CHILD RESTRAINT LABELS INCREASES THE RISK OF SERIOUS INJURY OR DEATH IN A SHARP TURN, SUDDEN STOP OR CRASH.** Your child's safety depends on the proper installation and use of this child restraint. Even if this child restraint seems easy to install and use, it is **VERY IMPORTANT** to read and understand these instructions and the vehicle owner's manual.

Follow all labels on this child restraint and in these written instructions. **DO NOT INSTALL OR USE THIS CHILD RESTRAINT UNTIL YOU READ AND UNDERSTAND THE INSTRUCTIONS IN THIS MANUAL AND IN YOUR VEHICLE OWNER'S MANUAL.**

**NO CHILD RESTRAINT CAN GUARANTEE PROTECTION WHEN THE VEHICLE IS SERIOUSLY IMPACTED.** However, when correctly installed, a child restraint will substantially improve the chances for survival and reduce the risk of serious injury in most crashes.

Carefully follow the instructions in this manual and in your vehicle owner's manual. If there is a discrepancy between the two, the vehicle owner's manual must take precedence with regards to seat belts and/or airbags.

**! DO NOT** allow children to play with this child restraint.

**! NEVER** leave children alone in a vehicle under any circumstance.

**! It is recommended that children are not left in their Enhanced Child Restraint System unattended.**

**! Set a good example by ALWAYS wearing your seat belt. Make it a firm rule that the vehicle does not move until everyone is buckled up. MAKE NO EXCEPTIONS.**

- ! Harmony Juvenile Products advises against loaning or passing along a child restraint. **DO NOT USE A SECOND-HAND CHILD RESTRAINT** or a child restraint whose history you do not know.
- ! When disposing a child restraint system, ensure to dispose of the unit in a way others cannot reuse it (e.g. use a dark trash bag, do not sell to a thrift shop or in a garage sale, etc.).
- ! Store the child restraint in a safe place when not in use. **DO NOT** place heavy objects on top of the child restraint while in storage.
- ! **DO NOT** remove any stickers or warnings as they contain important information.

## USAGE WARNINGS



- ! **ALWAYS** ASSIST YOUR CHILD WHEN GETTING INTO AND OUT OF THE CHILD RESTRAINT.
- ! **ENSURE** THAT THE CHILD RESTRAINT IS LEVEL, STABLE AND DOES NOT ROCK SIDE-TO-SIDE. IF THE CHILD RESTRAINT IS NOT STABLE, TRY ANOTHER SEATING LOCATION.
- ! **DO NOT ADD ANYTHING BEHIND OR UNDER THE CHILD RESTRAINT.**

According to accident statistics, **CHILDREN ARE SAFER WHEN PROPERLY RESTRAINED IN THE REAR SEATING POSITIONS THAN IN THE FRONT SEATING POSITION. THE SAFEST POSITION BEING THE CENTER IN THE EVENT OF A POSSIBLE SIDE IMPACT COLLISION.**

- ! **DO NOT** use any load bearing contact points other than those described in the instructions and marked in the child restraint.
- ! **DO NOT** allow others to install or use this child restraint unless they read and understand all the instructions and labels.
- ! **DO NOT GIVE THIS CHILD RESTRAINT** to someone else without also giving them this instruction manual. Additional instruction manuals can be downloaded directly from [www.harmonyjuvenile.com](http://www.harmonyjuvenile.com).
- ! To ensure proper child restraint use, keep and store this instruction manual and refer to it when necessary.
- ! **DO NOT LEAVE A CHILD RESTRAINT UNSECURED IN YOUR VEHICLE.** In a collision, sharp turn or sudden stop, an unsecured child restraint can injure other occupants. Remove it or make sure that it is securely attached with the vehicle seat belt and/or Isofix, even when not in use.

## INJURY WARNINGS

---

- ! **INJURIES MAY OCCUR EVEN IF YOU ARE NOT IN A CRASH** if the child restraint is not properly installed or if your child is not properly secured in the child restraint.
- ! The rigid items and plastic parts of an Enhanced Child Restraint System shall be so located and installed that they are not liable, during everyday use of the vehicle, to become trapped by a movable seat or in a door of the vehicle.
- ! **DO NOT** leave folding vehicle seats unlatched. In the event of a sharp turn, sudden stop or crash, a loose seat back could prevent the child restraint from protecting the child as well as it should.
- ! It is recommended that any luggage or other (loose) objects liable to cause injuries in the event of a collision shall be properly secured. In the event of a sharp turn, sudden stop or crash, loose objects will keep moving, potentially causing serious injuries.
- ! The Enhanced Child Restraint System shall not be used without the cover. It **MUST** always be used with the fabric cover provided by the manufacturer.
- ! The Enhanced Child Restraint System cover should not be replaced with any other than the one recommended by the manufacturer, because the cover constitutes an integral part of the restraint performance.
- ! **PARTS OF THE CHILD RESTRAINT COULD BECOME HOT ENOUGH TO BURN THE CHILD IF LEFT IN THE SUN.** Contact with these parts can injure your child. **ALWAYS** touch the surface of any metal or plastic parts before putting your child in the child restraint. Cover the child restraint with a towel or blanket when the vehicle is parked in direct sunlight. **KEEP AWAY FROM SUNLIGHT, OTHERWISE IT MAY BE TOO HOT FOR THE CHILD'S SKIN.**

## VEHICLE WARNINGS

---

- ! Use **ONLY** the vehicle's 3-point lap-and-shoulder belt system when restraining a child in this booster seat. **DO NOT** use this child restraint with 2-point vehicle belts (lap-belt only or shoulder-belt only). Your child would be seriously injured in the event of a crash.
- ! **DO NOT** use this child restraint if it can't be properly installed. It is possible that your vehicle has no suitable seating position for this child restraint due to seat belt type and/or airbag system. Read and follow these instructions, and your vehicle owner's manual carefully.

## AIRBAG WARNINGS

---

- ! **NEVER PLACE THIS CHILD RESTRAINT IN A VEHICLE SEATING LOCATION THAT HAS AN ACTIVE FRONTAL AIRBAG.** An inflating airbag may cause serious injury or death. Refer to your vehicle owner's manual for information about airbags and child restraint installation.

This child restraint may be used in a rear seating position equipped with side impact airbags providing they are:

- Roof mounted;
- "Curtain" type deployment;
- Will **NOT** interfere with, impact or in any way reposition the child restraint when inflated.

! If a vehicle's front seat location must be used, **ALWAYS** disable the airbag. Failure to disable the airbag system can result in serious injury or death. Follow the vehicle owner's manual for instructions on disabling the front airbag system.

Please refer to your vehicle owner's manual for airbag type, and for appropriate use with child restraints.

---

## DAMAGE WARNINGS

! It is recommended that the device should be changed when it has been subject to violent stresses in an accident.

! **DO NOT USE A CHILD RESTRAINT THAT HAS BEEN IN AN ACCIDENT OF ANY KIND.** An accident can cause damage to the child restraint that you cannot see.

! **DO NOT** use this child restraint if it is damaged in any way or has missing parts.

! **NEVER** use a cut, frayed or damaged vehicle seat belt or harness.

! **DO NOT** tamper with or modify the child restraint, for any reason. Any unauthorised alterations or additions to the device without the approval of the Type Approval Authority can cause serious injury or death in a sharp turn, sudden stop, or crash.

! **DO NOT** use anything to raise the child restraint off the vehicle seat. Untested modifications, such as adding extra padding, could affect the safety of the child restraint and result in serious injury or death in a crash.

! **DO NOT, EXCEPT AS DESCRIBED IN THESE INSTRUCTIONS, MODIFY YOUR CHILD RESTRAINT, DISASSEMBLE ANY PART OR CHANGE THE WAY THE VEHICLE SEAT BELTS ARE USED.** This includes any accessories or parts by other manufacturers as non-tested accessories can affect the safety of the child restraint.

---

## AIRCRAFT INSTALLATION

This child restraint is **NOT CERTIFIED** for aircraft use. Aircraft seats are not equipped with 3-point lap-and-shoulder belts which are required for use with this child restraint.

---

## CARE AND MAINTENANCE

### CLEANING YOUR SEAT COVER:

- **MACHINE WASH SEPARATELY** using cold water - delicate cycle.
- **DO NOT BLEACH.**
- **DRIP DRY** to prevent cover from shrinking.

! **DO NOT** wash EPE foam pad insert under seat cover.



### **CLEANING THE PLASTIC SHELL:**

- **SPONGE CLEAN** using warm water and mild soap.
- **TOWEL DRY.**
- **DO NOT** use solvents, abrasive cleaners, or disassemble child restraint in any way, except as instructed.

### **CLEANING METAL, PLASTIC, AND ISOFIX PARTS:**

- Use mild soap and cool water on a damp cloth.

## **WARRANTY**

---

This child restraint was manufactured by Harmony® Juvenile Products (HJP). HJP warrants this product to the original retail purchaser as follows:

### **LIMITED 2-YEAR WARRANTY**

The following warranty conditions only apply to the country in which this product was first sold through retail channels to a consumer.

This child restraint is warranted against defective materials and workmanship for **TWO (2)** years from the date of original purchase. *An original receipt is required to validate your warranty.* HJP will, at its option, provide replacement parts for this product or replace this product. HJP reserves the right to discontinue or change fabrics, parts, models or products, or to make substitutions.

To make a claim under this warranty, you must contact HJP Customer Service at **[www.harmonyjuvenile.com](http://www.harmonyjuvenile.com)**, or write to 10 Beach Priory Gdns., Southport, UK, PR8 1RT.

Proof of purchase is required and shipping charges are the responsibility of the consumer.

### **WARRANTY LIMITATIONS**

This warranty does not include:

1. Damages which arise from negligence, misuse, or use not in accordance with this instruction manual.
2. Damage and wear arising from excessive stress.
3. Replacement of fabric as a result of natural wear or fading of the fabric as a result of exposure to the sun or UV radiation.

The use of non-Harmony branded covers, inserts, toys, accessories or tightening devices is not approved by HJP. Their use could cause this child restraint to fail federal safety standards or perform worse in a crash. Their use automatically voids the HJP warranty.

### **LIMITATIONS OF DAMAGES**

The warranty and remedies as set forth above are exclusive and in lieu of all others, oral or written, expressed or implied. In no event will HJP or the retailer selling this product be liable to you for any damages, including incidental or consequential damages, or loss of use arising out of the use or inability to use this product.

**PLEASE REGISTER THIS CHILD RESTRAINT WITHIN 30 DAYS OF PURCHASE TO EXPEDITE WARRANTY CLAIMS AND TO VERIFY ORIGINAL DATE OF PURCHASE.**